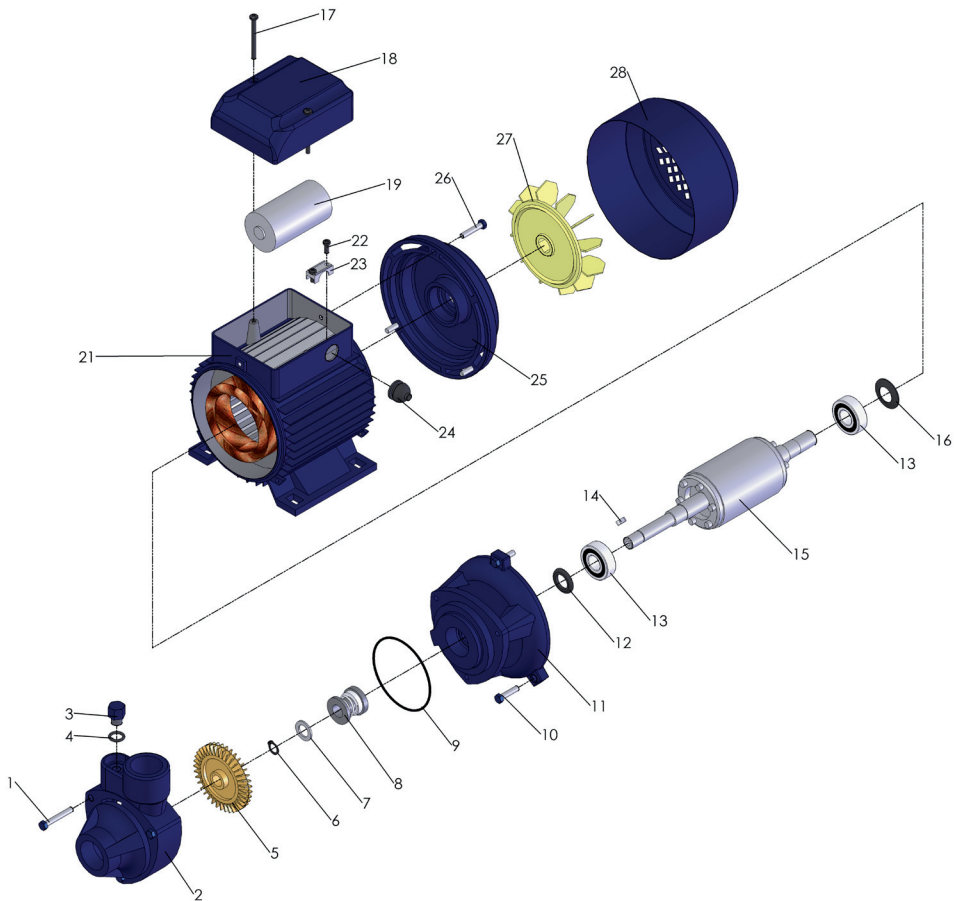


BOMBAS MKP

Catálogo de peças



VISTA EXPLODIDA



QUADRO DE PEÇAS - BOMBA MKP

CÓDIGO	POSIÇÃO	DESCRIÇÃO	MODELO
P075.P.01010	1	PARAFUSO	MKP 60
P075.P.01011	1	PARAFUSO	MKP 70 / 80
P075.P.01020	2	MANCAL	MKP 60
P075.P.01021	2	MANCAL	MKP 70 / 80
P075.P.01030	3	PARAFUSO	MKP 60 / 70 / 80
P075.P.01040	4	ANEL	MKP 60 / 70 / 80
P075.P.01050	5	IMPULSOR	MKP 60
P075.P.01051	5	IMPULSOR	MKP 70 / 80
P075.P.01060	6	ANEL TRAVA	MKP 60 / 70 / 80
P075.P.01070	7	ARRUELA	MKP 60 / 70 / 80
P075.P.01080	8	SELO MECÂNICO	MKP 60 / 70 / 80
P075.P.01090	9	ANEL O'RING	MKP 60
P075.P.01091	9	ANEL O'RING	MKP 70 / 80
P075.P.01100	10	PARAFUSO	MKP 60
P075.P.01101	10	PARAFUSO	MKP 70 / 80
P075.P.01110	11	MANCAL	MKP 60
P075.P.01111	11	MANCAL	MKP 70 / 80
P075.P.01120	12	ANEL DE VEDACAO	MKP 60 / 70 / 80
P075.P.01130	13	ROLAMENTO 6201	MKP 60
P075.P.01131	13	ROLAMENTO 6202	MKP 70 / 80
P075.P.01140	14	CHAVETA	MKP 60 / 70 / 80
P075.P.01150	15	ROTOR	MKP 60
P075.P.01151	15	ROTOR	MKP 70
P075.P.01152	15	ROTOR	MKP 80
P075.P.01160	16	ARRUELA ONDULADA	MKP 60
P075.P.01161	16	ARRUELA ONDULADA	MKP 70 / 80
P075.P.01170	17	PARAFUSO	MKP 60
P075.P.01171	17	PARAFUSO	MKP 70 / 80

QUADRO DE PEÇAS - BOMBA MKP

CÓDIGO	POSIÇÃO	DESCRIÇÃO	MODELO
P075.P.01180	18	TAMPA DO CAPACITOR	MKP 60
P075.P.01181	18	TAMPA DO CAPACITOR	MKP 70 / 80
P075.P.01190	19	CAPACITOR	MKP 60
P075.P.01191	19	CAPACITOR	MKP 70 / 80
P075.P.01210	21	CAIXA DO ESTATOR	MKP 60
P075.P.01211	21	CAIXA DO ESTATOR	MKP 70
P075.P.01212	21	CAIXA DO ESTATOR	MKP 80
P075.P.01220	22	PARAFUSO	MKP 60 / 70 / 80
P075.P.01230	23	PRESILHA	MKP 60 / 70 / 80
P075.P.01240	24	PROTEÇÃO DO CABO	MKP 60 / 70 / 80
P075.P.01250	25	TAMPA DO MOTOR	MKP 60
P075.P.01251	25	TAMPA DO MOTOR	MKP 70 / 80
P075.P.01260	26	PARAFUSO	MKP 60
P075.P.01261	26	PARAFUSO	MKP 70 / 80
P075.P.01270	27	VENTOINHA	MKP 60
P075.P.01271	27	VENTOINHA	MKP 70 / 80
P075.P.01280	28	TAMPA DA VENTOINHA	MKP 60
P075.P.01281	28	TAMPA DA VENTOINHA	MKP 70
P075.P.01282	28	TAMPA DA VENTOINHA	MKP 80



www.bramex.com.br
sac@bramex.com.br

 **0800 301040**

Bramex

The logo for Bramex features the word "Bramex" in a bold, dark blue, sans-serif font. The text is centered and enclosed within a bright yellow, hand-drawn style oval that loops around the letters.